

NAA10 Antibody (Center)
Purified Rabbit Polyclonal Antibody (Pab)
Catalog # AP21992c**Specification**

NAA10 Antibody (Center) - Product Information

Application	WB, IF, E
Primary Accession	P41227
Other Accession	Q2KI14 , Q9QY36
Reactivity	Human
Predicted	Bovine, Mouse
Host	Rabbit
Clonality	polyclonal
Isotype	Rabbit IgG
Calculated MW	26459

NAA10 Antibody (Center) - Additional Information**Gene ID** 8260**Other Names**

N-alpha-acetyltransferase 10, 2.3.1.-, 2.3.1.88, N-terminal acetyltransferase complex ARD1 subunit homolog A, NatA catalytic subunit Naa10, NAA10, ARD1, ARD1A, TE2

Target/Specificity

This NAA10 antibody is generated from a rabbit immunized with a KLH conjugated synthetic peptide between 135-167 amino acids from the Central region of human NAA10.

Dilution

WB~~1:2000

IF~~1:25

E~~Use at an assay dependent concentration.

Format

Purified polyclonal antibody supplied in PBS with 0.09% (W/V) sodium azide. This antibody is purified through a protein A column, followed by peptide affinity purification.

Storage

Maintain refrigerated at 2-8°C for up to 2 weeks. For long term storage store at -20°C in small aliquots to prevent freeze-thaw cycles.

Precautions

NAA10 Antibody (Center) is for research use only and not for use in diagnostic or therapeutic procedures.

NAA10 Antibody (Center) - Protein Information**Name** NAA10

Synonyms ARD1, ARD1A, TE2

Function Catalytic subunit of N-terminal acetyltransferase complexes which display alpha (N-terminal) acetyltransferase activity (PubMed:[15496142](#), PubMed:[19420222](#), PubMed:[19826488](#), PubMed:[20145209](#), PubMed:[20154145](#), PubMed:[25489052](#), PubMed:[27708256](#), PubMed:[29754825](#), PubMed:[32042062](#)). Acetylates amino termini that are devoid of initiator methionine (PubMed:[19420222](#)). The alpha (N-terminal) acetyltransferase activity may be important for vascular, hematopoietic and neuronal growth and development. Without NAA15, displays epsilon (internal) acetyltransferase activity towards HIF1A, thereby promoting its degradation (PubMed:[12464182](#)). Represses MYLK kinase activity by acetylation, and thus represses tumor cell migration (PubMed:[19826488](#)). Acetylates, and stabilizes TSC2, thereby repressing mTOR activity and suppressing cancer development (PubMed:[20145209](#)). Acetylates HSPA1A and HSPA1B at 'Lys-77' which enhances its chaperone activity and leads to preferential binding to co-chaperone HOPX (PubMed:[27708256](#)). Acetylates HIST1H4A (PubMed:[29754825](#)). Acts as a negative regulator of sister chromatid cohesion during mitosis (PubMed:[27422821](#)).

Cellular Location

Cytoplasm. Nucleus. Note=Also present in the free cytosolic and cytoskeleton-bound polysomes.

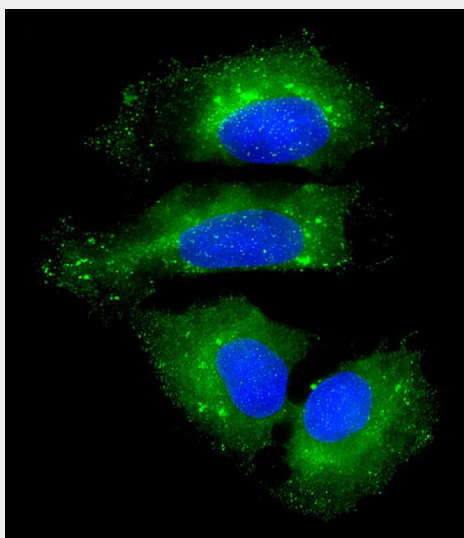
Tissue Location

Ubiquitous..

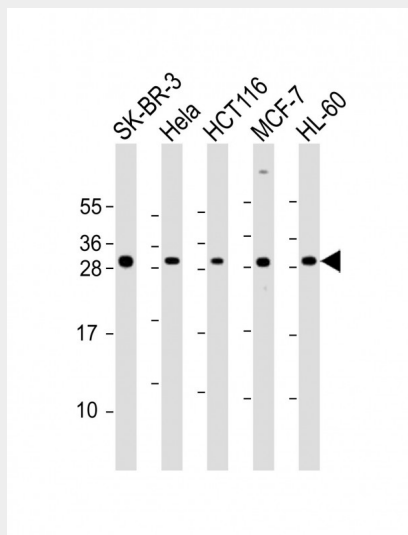
NAA10 Antibody (Center) - Protocols

Provided below are standard protocols that you may find useful for product applications.

- [Western Blot](#)
- [Blocking Peptides](#)
- [Dot Blot](#)
- [Immunohistochemistry](#)
- [Immunofluorescence](#)
- [Immunoprecipitation](#)
- [Flow Cytometry](#)
- [Cell Culture](#)

NAA10 Antibody (Center) - Images

Immunofluorescent analysis of 4% paraformaldehyde-fixed, 0.1% Triton X-100 permeabilized U-2 OS (human osteosarcoma cell line) cells labeling NAA10 with AP21992c at 1/25 dilution, followed by Dylight® 488-conjugated goat anti-rabbit IgG (NK179883) secondary antibody at 1/200 dilution (green). Immunofluorescence image showing cytoplasm and weak nucleus staining on U-2 OS cell line. The nuclear counter stain is DAPI (blue).



All lanes : Anti-NAA10 Antibody (Center) at 1:2000 dilution Lane 1: SK-BR-3 whole cell lysate Lane 2: HeLa whole cell lysate Lane 3: HCT116 whole cell lysate Lane 4: MCF-7 whole cell lysate Lane 5: HL-60 whole cell lysate Lysates/proteins at 20 µg per lane. Secondary Goat Anti-Rabbit IgG, (H+L), Peroxidase conjugated at 1/10000 dilution. Predicted band size : 26 kDa Blocking/Dilution buffer: 5% NFDM/TBST.

NAA10 Antibody (Center) - Background

Catalytic subunit of the N-terminal acetyltransferase A (NatA) complex which displays alpha (N-terminal) acetyltransferase activity. The NAT activity may be important for vascular, hematopoietic and neuronal growth and development. Without NAA15, displays epsilon (internal) acetyltransferase activity towards HIF1A, thereby promoting its degradation. Represses MYLK kinase activity by acetylation, and thus represses tumor cell migration. Acetylates, and stabilizes TSC2, thereby repressing mTOR activity and suppressing cancer development.

NAA10 Antibody (Center) - References

Tribioli C.,et al.Hum. Mol. Genet. 3:1061-1068(1994).
Arnesen T.,et al.Biochem. J. 386:433-443(2005).
Ross M.T.,et al.Nature 434:325-337(2005).
Mural R.J.,et al.Submitted (SEP-2005) to the EMBL/GenBank/DDBJ databases.
Jeong J.-W.,et al.Cell 111:709-720(2002).